

## Troubleshooting Login failed Error 18456

<http://sql-articles.com/articles/troubleshooting/troubleshooting-login-failed-error-18456>Written

### INTRODUCTION:

This error is the most unanimous when it comes to sql server user rights. And moreover this error 18456 is a generic message and the state described with this error in sp\_readerrorlog is important as that can be handy to track down the exact reason. In this article I will be taking you through the different states associated with this error along with reason and remedial action.

### STATE 1:

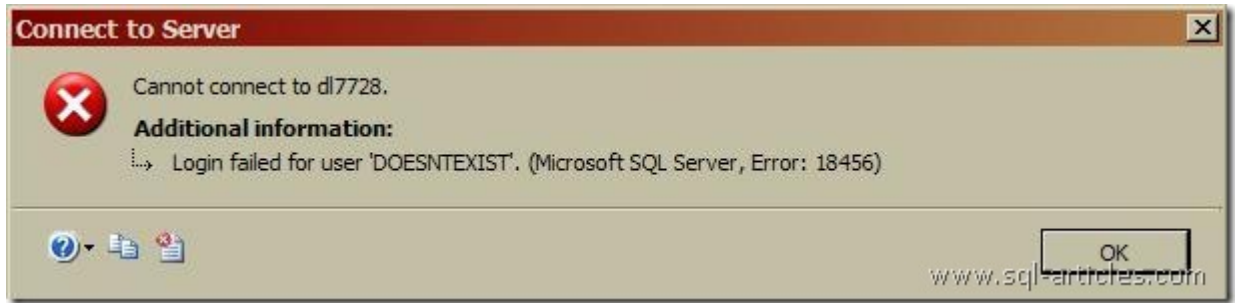
This state occurs for all user access problems in sql server 2000. There is nothing much in sql error logs. The troubleshooting was quite tougher here .But from sql 2005, each and every logon failure has certain describing entries for different states for all login failures.



### STATE 2 & 5:

This state occurs when a user logs in with the name that doesn't exist on the sql server. This error mostly comes in when users specify wrong user name or misspell the user name.

I am logging in to my 2005 instance with a username called DOESNTEXIST and let's see what the error state in error log is.



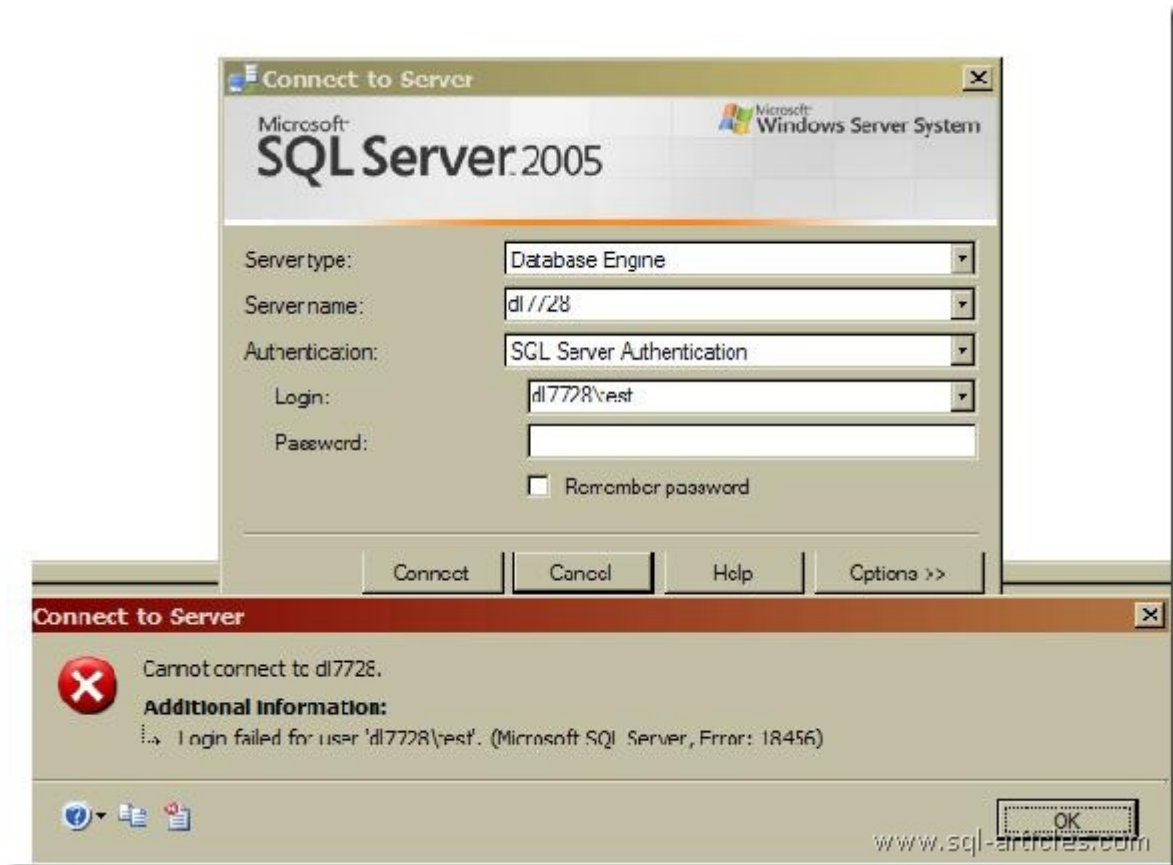
*2009-10-08 10:57:30.520 Logon Errors: 18456, Severity: 14, State: 5.*

*2009-10-08 10:57:30.520 Logon Login failed for user 'DOESNTEXIST'.*

*[CLIENT: ]*

#### **STATE 6:**

This state occurs when a user try to login with a WINDOWS account but specifying that as a sql account. I have a windows account test (dl7728\test) but I am specifying it as a sql account and trying to login here and let's see what the error log says



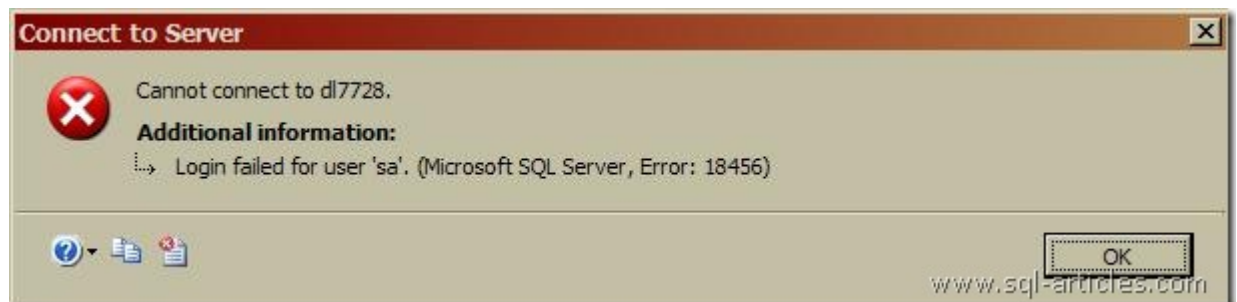
*2009-10-08 11:05:47.180 Logon Error: 18456, Severity: 14, State: 6.*

*2009-10-08 11:05:47.180 Logon Login failed for user 'dl7728\test'.*

*[CLIENT: ]*

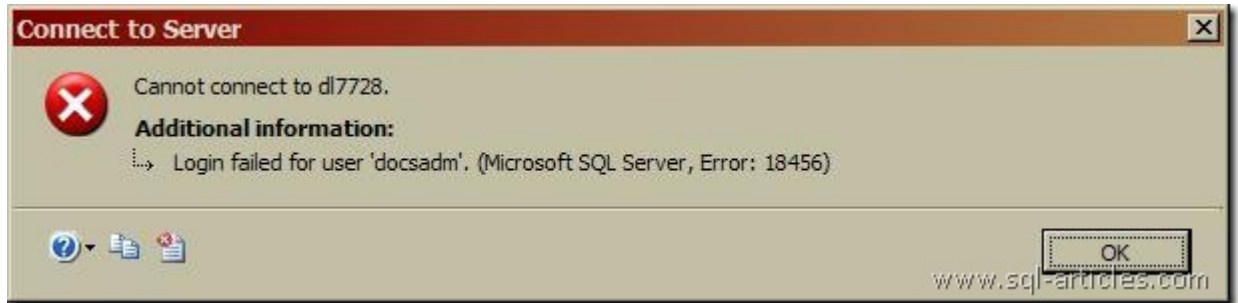
**STATE 7 & 8:**

If there is a mismatch in SA password the state will be 7 and for any other logins the state is 8.



*2009-10-08 11:12:29.100 Logon Error: 18456, Severity: 14, State: 7.*

*2009-10-08 11:12:29.100 Logon Login failed for user 'sa'. [CLIENT: ]*



*2009-10-08 11:14:18.440 Logon Error: 18456, Severity: 14, State: 8.*

*2009-10-08 11:14:18.440 Logon Login failed for user 'docsadm'.*

*[CLIENT: ]*

#### **STATE 9:**

This state means that the password was rejected by the password policy check as an invalid one. The policy API has rejected the password with error NERR\_BadPassword. See more info on this error and visit

[http://msdn.microsoft.com/library/default.asp?url=/library/enus/netmgmt/netmgmt/net\\_validate\\_output\\_arg.asp](http://msdn.microsoft.com/library/default.asp?url=/library/enus/netmgmt/netmgmt/net_validate_output_arg.asp).

#### **STATE 11 &12:**

This state means the domain login trying to access sql server that wasn't explicitly added to sql server .Even though it can access OS, it can't login in to sql server. To overcome this error, you can add that domain login to sql logins explicitly provided you have create login permission.

*2009-10-08 12:24:01.470 Logon Error: 18456, Severity: 14, State: 11.*

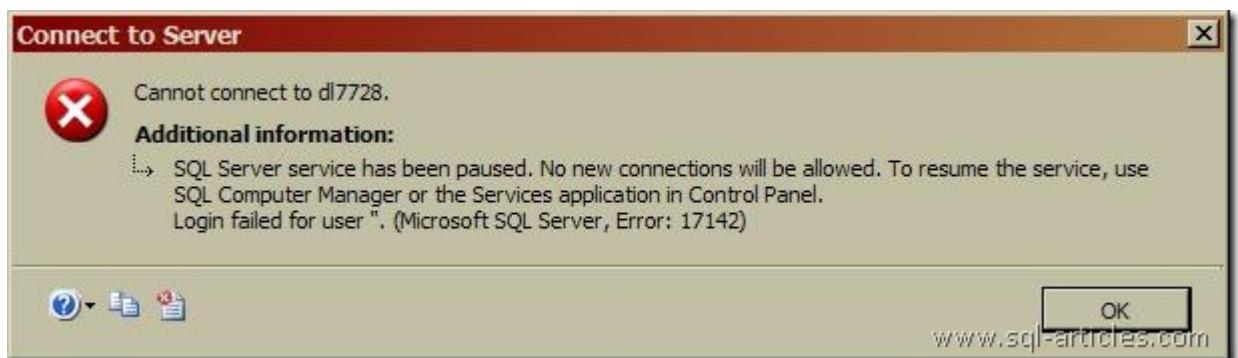
*2009-10-08 12:24:01.470 Logon Login failed for user 'X\s\_aa'.*

*[CLIENT: ]*

STATE 13:

This state occurs when any login tries to get access to sql server with services paused on it.

But for this reason , there will also be other error number 17142 .



*2009-10-08 12:31:28.620 spid57 Error: 17142, Severity: 14, State: 0.*

*2009-10-08 12:31:28.620 spid57 SQL Server service has been paused.*

*No new connections will be allowed. To resume the service, use SQL Computer Manager or the Services application in Control Panel.*

*2009-10-08 12:31:28.620 Logon Error: 18456, Severity: 14, State: 13.*

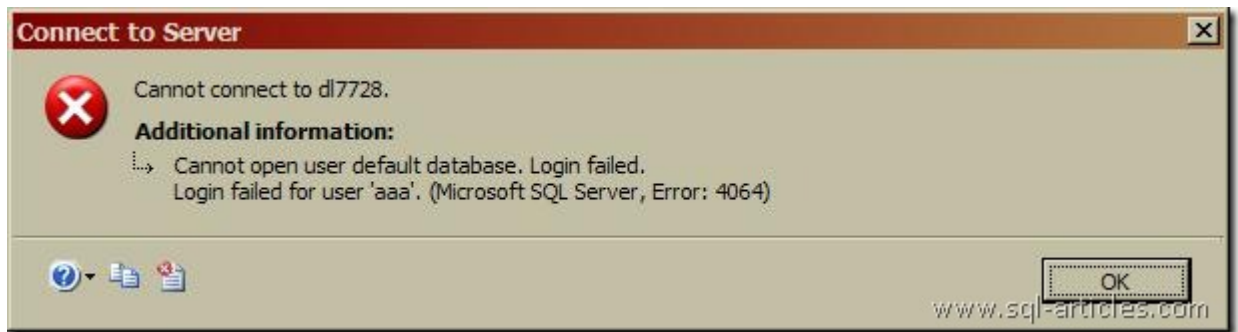
*2009-10-08 12:31:28.620 Logon Login failed for user \". [CLIENT: ]*

STATE 16:

This state occurs for the logins in sql server when its default database is unavailable.

(Database may be removed or offline). But the error shown in the SSMS window is 4064 but

the error number recorded in error log is 18456.



*2009-10-08 13:01:49.410 Logon Error: 18456, Severity: 14, State: 16.*

*2009-10-08 13:01:49.410 Logon Login failed for user 'aaa'.*

*[CLIENT: ].*

You can solve this problem by either bringing the default db online or changing the default db for that login and logging in again.

\*\*

There are several other states that might also need some introduction but I am not covering them in detail.

#### **STATE 18:**

This state occurs when a sql login is added with USER MUST CHANGE THEIR PASSORD ON FIRST LOGIN; this state gets in to error log when the new password box prompts up.

#### **STATE 23:**

This state occurs when simultaneous action of shutting down SQL SERVER and any incoming logins to sql server takes place.

#### **STATE 38:**

This state occurs when DEFAULT database for a login is not available at the server (SQL 2008 and 2008R2).

#### **STATE 40:**

This state occurs when a new login is created with the default db option being set to a database which is OFFLINE or unavailable in sql 2008 or 2008 R2.

To close this off, I wanted to mention one more important error associated with logins- -

ERROR 18470 occurs when a DISABLED login is used for accessing sql server. I thought it needed a special mention in this article.

This error will be one of the close buddies of all developers and DBAs working in and with sql server technologies. Hope this article will give a better way of narrowing down the error with its state, thus making the troubleshooting process simpler. HAPPY 18456

TROUBLESHOOTING...!

Read more:  
<http://sql-articles.com/articles/troubleshooting/troubleshooting-login-failed-error-18456#ixzz1IpQ39XmE>